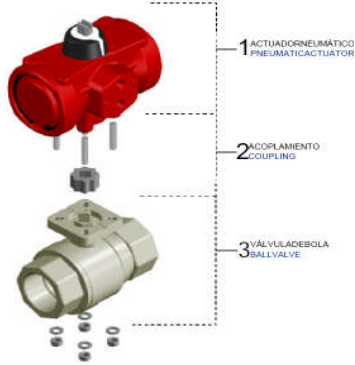




ALPHA CONTROLS LTD. ALPHA HOUSE, HINDLEY INDUSTRIAL ESTATE,
SWAN LANE, HINDLEY GREEN, WIGAN. WN2 4HR
TEL No 01942 525833 FAX No 01942 523413
technicalsales@alphacontrols.co.uk
www.alphacontrols.co.uk

2 WAY ACTUATED 2 PC SS316 BALL VALVE ~ FULL BORE



PNEUMATIC ACTUATOR

MATERIAL :
MAX PRESSURE
MAX TEMPERATURE
INTERNAL/EXTERNAL FINISH

ALUMINIUM ALLOY
8 BAR G
-32 TO + 90C
EPOXY WITH RILSAN

BALL VALVE

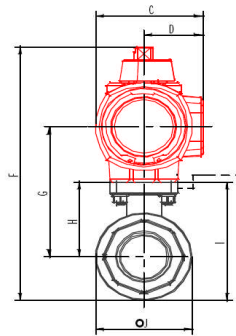
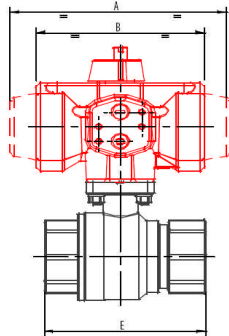
THREADS :
MATERIAL :
BODY
BALL
STEM
BALL SEATS
STEM SEALS

BSPP
CF8M (SS316)
SS316
SS316
PTFE
PTFE

MAX TEMPERATURE
MAX PRESSURE RATE

-20 TO + 220C
1/2" TO 2" 1000 PSI G/PN64
2 1/2" & 3" 800 PSI G/PN50

PRESSURE/TEMPERATURE GRAPH AVAILABLE ON REQUEST



SIZE	DN	S/ACTING	REFERENC	A	C	D	E	F	G	H	I	J
1/4"	10	PWSF03	ACL/RSA/	143.5	68.5	37.5	65.0	123.6	69.6	38.6	38.6	36.0
3/8"	10	PWSF03	ACL/RSA/	143.5	68.5	37.5	65.0	123.6	69.6	38.6	38.6	36.0
1/2"	15	PWSF03	ACL/RSA/	143.5	68.5	37.5	65.0	123.6	69.6	38.6	38.6	37.0
3/4"	20	P00SF04	ACL/RSA/	160.0	80.0	44.0	74.5	156.1	91.1	46.1	46.1	43.0
1"	25	P05S	ACL/RSA/	194.0	98.0	53.0	88.0	178.6	103.6	56.6	56.6	52.0
1 1/4"	32	P05S	ACL/RSA/	194.0	98.0	53.0	102.0	183.0	108.0	61.0	61.0	63.0
1 1/2"	40	P10S	ACL/RSA/	236.0	102.0	55.0	110.0	204.5	128.0	77.5	77.5	73.0
2"	50	P15S	ACL/RSA/	194.0	98.0	53.0	125.0	233.2	135.7	85.2	85.2	91.0
2 1/2"	65	P15S	ACL/RSA/	266.0	102.0	55.0	160.6	256.7	171.7	108.7	108.7	118.0
3"	80	P25S	ACL/RSA/	362.0	152.0	78.0	178.0	308.4	203.4	117.4	117.4	139.0

SIZE	DN	D/ACTING	REFERENC	B	C	D	E	F	G	H	I	J
1/4"	10	PWF03	ACL/RDA/	109.0	68.5	37.5	65.0	123.6	69.6	38.6	38.6	36.0
3/8"	10	PWF03	ACL/RDA/	109.0	68.5	37.5	65.0	123.6	69.6	38.6	38.6	36.0
1/2"	15	PWF03	ACL/RDA/	109.0	68.5	37.5	65.0	123.6	69.6	38.6	38.6	37.0
3/4"	20	PWF03	ACL/RDA/	109.0	68.5	37.5	74.5	123.6	77.1	46.1	46.1	43.0
1"	25	PWF03	ACL/RDA/	109.0	68.5	37.5	88.0	123.6	87.6	56.6	56.6	52.0
1 1/4"	32	P00	ACL/RDA/	125.0	68.5	37.5	102.0	171.0	106.0	61.0	61.0	63.0
1 1/2"	40	P05	ACL/RDA/	146.0	68.5	37.5	110.0	199.5	124.5	77.5	77.5	73.0
2"	50	P05	ACL/RDA/	146.0	80.0	44.0	125.0	207.2	132.2	85.2	85.2	91.0
2 1/2"	65	P10	ACL/RDA/	182.0	98.0	53.0	160.6	235.7	159.2	108.7	108.7	118.0
3"	80	P15	ACL/RDA/	203.0	102.0	55.0	178.0	265.4	180.4	117.4	117.4	139.0

ALL ACTUATORS SIZED ON CLEAN COLD WATER WITH AIR PILOT OF 6 BAR G
FOR DRY OR DIFFICULT MEDIA APPLICATIONS ~ PLEASE CONSULT OUR OFFICE

IF ASSEMBLY IS REQUIRED NORMALLY OPEN CHANGE N/C TO N/O ON YOUR ORDER