

**PRODUCT NAME**  
**ACHEM FLAMEPROOF NAMUR SOLENOID VALVE**  
**MODEL NO.**  
**ALV320F4C5**

**DESCRIPTION OF THE PRODUCT**  
 Based on NAMUR standard(24x32), the ALV320F4C5 ACHEM NAMUR solenoid valve can be directly mounted on actuator with 5/3 functions for controlling three positions of double-acting pneumatic actuators which located in hazardous area(Zone 1 &2). Working pressure from 2 bar to 8 bar and the working voltage from 12-48VDC, 110-240VAC.



**APPROVED BY**



**Coil Specification(C5)**

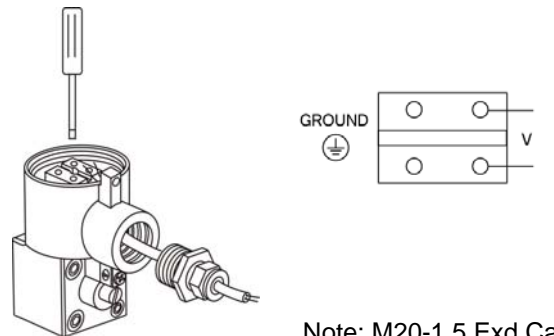
Coil Enclosure	Die-casting aluminum + Epoxy coated
Wiring Connector	M20-1.5 or 1/2"NPT, Terminal Strip
Operating Voltage	12/24/48VDC-3.5W 110/210/220/240VAC-4VA(50/60HZ)
Insulation Protection	F Class Coil
Insulated voltage	1000V
Duty factor	100% ED
Area Classification	Ex d IIC T6(Class 1,Division 1,Group ABCD)
Weather Proof	IP66
Operating Temp.	-20°C~60°C

**SPOOL VALVE TECHNICAL DATA**

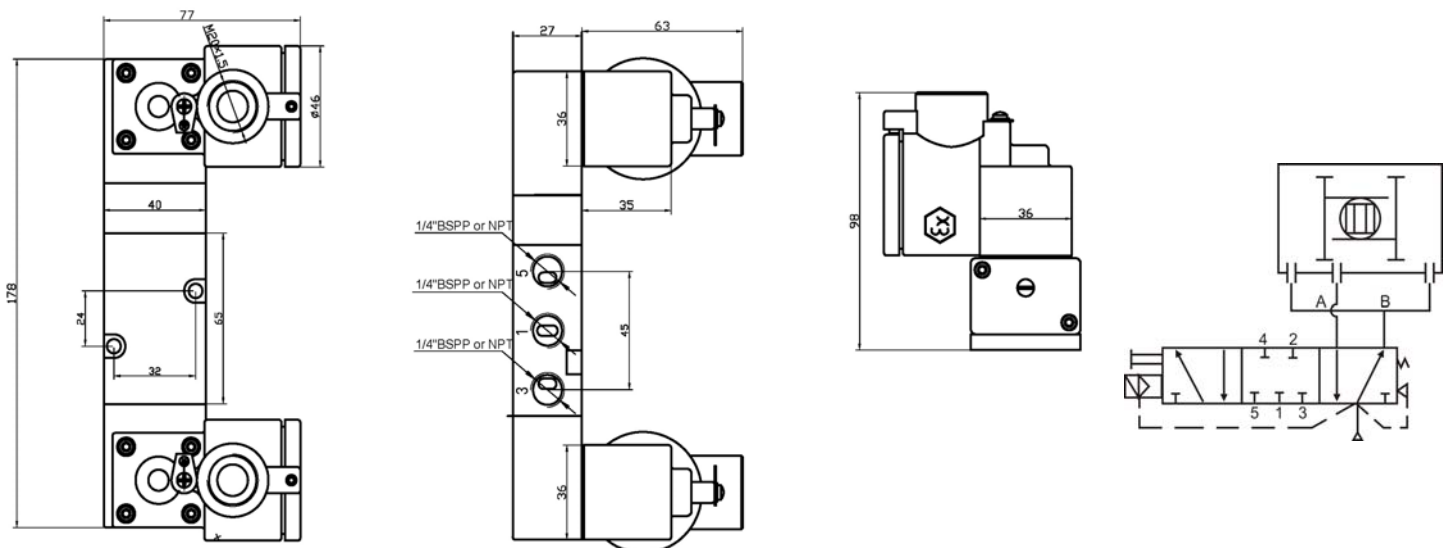
Spool valve/Body	Extruded aluminum
Coating	Anodized coated, or Nickel coated in chemical
Seal	Buna N
Materials in contact with fluid	Aluminum, Glass-filled PA, Buna N
Function	5/3, CV =1.4, 1377.6 l/min, block center, Bistable 3/3 available with 3/3 adaptor plate
Air Ports	Air ports 1/4" BSPP or NPT
Assembly and Connection	24x32 Namur, Manual override on body
Fasteners	Stainless steel
Medium Temperature	-5°C~80°C
Working Pressure	2~8 bar
Working Medium	less than 40µm filtered and dried air
Working life	more than 1000,000 cycle (On the normal working condition)
Main feature	1, Manual override on the body;

- 2, 3/2NC and 5/2 Namur connections on same body;
- 3, Interchangeable coils for various hazardous area options;
- 4, Stainless steel exhaust dust caps fitted as standard.

**Wiring Diagram**



**DRAWING AND MOUNTING**



\*\*\*For continuous improvement of the product, we reserve the right to alter the dimensions, technical data and information included in this data sheet.

