

ALPHA-ACHEM Data Sheet**

Product ID ALV610F3C3

PRODUCT NAME

Low Power Stainless Steel Explosion Proof Solenoid Valve

MODEL NO.

ALV610F3C3

DESCRIPTION OF THE PRODUCT

Based on NAMUR standard (32×24), the ALV510F3C3 ACHAM NAMUR solenoid valve can be adapted for 3/2 NC or 5/2 functions for controlling double-acting and single-acting pneumatic actuators. It is excellent for being used in hazardous area (Ex ia IIC T6). Working pressure from 2 bar to 8 bar and the working voltage is 24VDC.



APPROVED BY



Solenoid Coil: C3

Operating Voltage 24VDC<1W

Voltage Tolerance ±10%

Coil Enclosure External Thread Din Plug

Cable Size Dia.3-5.5mm

Insulation Protection F Class

Insulated Voltage 1000V

Duty Factor 100% ED

Weather Proof IP64

Area Classification Ex ia IIC T6

Operating Temp.* -10°C~50°C

SPECIFICATIONS AND TECHNICAL DATA

Spool Valve/Body Stainless Steel 316

Coating None

Seal Buna N

Materials in Contact with Fluid Stainless Steel, Glass-filled Resin, Buna N

Function 5/2 or 3/2NC, Monostable, Pilot Operation

Air Ports Air Ports 1/4" BSPP or NPT

Flow Rate CV =1.1(19.63mm²)

Installation and Connection 24×32 Namur
Manual Override On Body

Fasteners Stainless Steel

Environment Indoor and Outdoor

Medium Temperature* -20°C~80°C

Working Pressure 2~8 bar

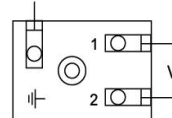
Working Medium Less Than 40µm Filtered and Dried Air

Bistable (ALV520F3-) Available On Requiring

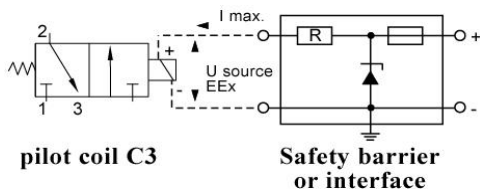
Working Life More Than 1000,000 Cycle
(On The Normal Working Condition)

Wiring Diagram

GROUND



Refer to above drawing, the coil C3 must be connected individually to an approved safety barrier. Placed in safe zone, these safety barriers can be used to supply ATEX pilot coil C3 installed in a hazardous zone. The electrical connection between the safety barrier (or interface) and the pilot coil C3 can be made using ordinary wires or cables. The inductance of the connecting line between the safety barrier and the pilot coil C3 must be less than 0.5mH.



U source EEX <28V

I max/coil <37mA

C int 0

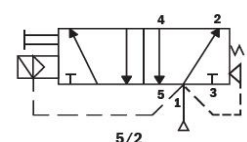
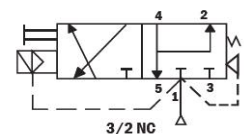
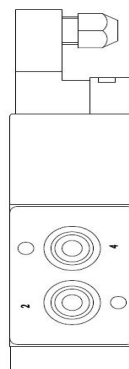
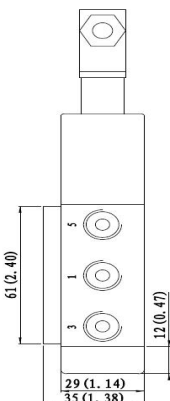
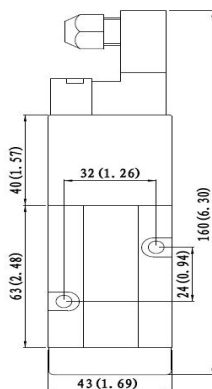
R at +20°C 580 Ohm +/-7%

R at -10°C >476 Ohm

R at +50°C <690 Ohm

* When the operating temp. is different with medium temperature, the one has smaller absolute value must be chose.

DRAWING AND DIMENSION



**For continuous improvement of the product, we reserve the right to alter the dimensions, technical data and information included in this data sheet.



Engineering & Technical Centre, 1 Ormside Close, Hindley Industrial Estate, Hindley Green, Wigan, WN24HR, Greater Manchester, UK, Tel +44 (0) 1942 525833, Technicalsales@alphacontrols.co.uk, www.alphacontrols.co.uk

