


# Flameproof Hazardous Area Solenoid Valve - Namur Size I

**ATEX**  **II 2 G Ex d IIC T6 Gb -20°C ≤ T amb ≤ +60°C**  
**SS316 Stainless Steel Body**  
**SS316 Stainless Steel Coil Enclosure**

Based on NAMUR standard, the same **ALV STAINLESS STEEL NAMUR SOLENOID VALVE** can be adapted for 3/2 way N/Closed as standard, 3/2 Way N/Open on request or 5/2 way functions. Designed with SS316 stainless steel body, SS316 stainless steel coil enclosure, it is excellent for use in corrosive and hazardous Zone 1 areas. Working pressure from 2bar to 8bar and voltages from 12-48VDC, 110-240VAC.



QA Notification No: SIRA 12 ATEX M526  
Notified Body No: 0518 for Annexes IV and VII



EC-Type Examination Certificate Number: DNV 12 ATEX 13733X  
Notified Body No: 0575

APPROVED BY:   **IP66**

## SPECIFICATIONS AND TECHNICAL DATA

### SPOOL BODY

- **Spool valve Body:** Stainless Steel (316)
- **Seal:** Buna N
- **Materials in contact with fluid:** Stainless Steel (SS316) Glass-filled PA, POM, Buna N
- **Function:** 5/2 and 3/2NC as standard, 3/2 N/Open on request  
CV=1.1(19.63mm<sup>2</sup>) Monostable
- **Air Ports:** Air ports G1/4" BSPP or NPT
- **Assembly and Connection:** 24x32mm Namur Size I, Manual override as standard on body. Without manual override on request
- **Fasteners:** SS316 Stainless steel
- **Environment:** Type 4, 4X (indoor and outdoor)
- **Area Classification:** ATEX II 2 G Ex d IIC T6
- **Working Temperature:** -25°C~80°C
- **Working Pressure:** 2~8 bar
- **Working Medium:** less than 40µm filtered and dried air
- **Bistable(ALV620F3C4)** available on request
- **Working life:** better than 1000,000 cycle (On the normal working condition)

### SOLENOID COIL

- **Model No:** C4 (Flameproof Coil)
- **Operating Voltage:** 12/24/48VDC-3.5W, 24VDC-1W on request 110/210/220/240VAC-4VA(50/60HZ))
- **Coil Enclosure:** SS316 Stainless steel
- **Wiring Connector:** M20x1.5 cable entry as standard, 1/2" NPT on request. Terminal Strip
- **Insulation Protection:** F Class Coil Winding
- **Insulated voltage:** 1000V
- **Duty factor:** 100%
- **Weather Proof:** IP66
- **Area Classification:** Ex d IIC T6
- **Operating Temp:** -20°C~60°C

**HIGH QUALITY | EXCELLENT PRICE | WHERE QUALITY COUNTS**

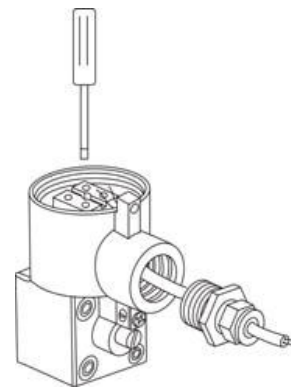
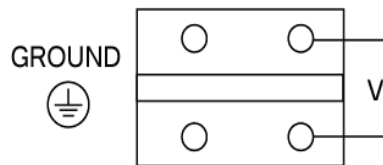
Alpha Controls Ltd Alpha House, 1 Ormside Close, Hindley Industrial Estate, Hindley Green, Wigan. WN2 4HR. | Tel: +44 (0)1942 525833 | E-mail: technicalsales@alphacontrols.co.uk  
www.alphacontrols.co.uk | www.alphacontrolssystems.com



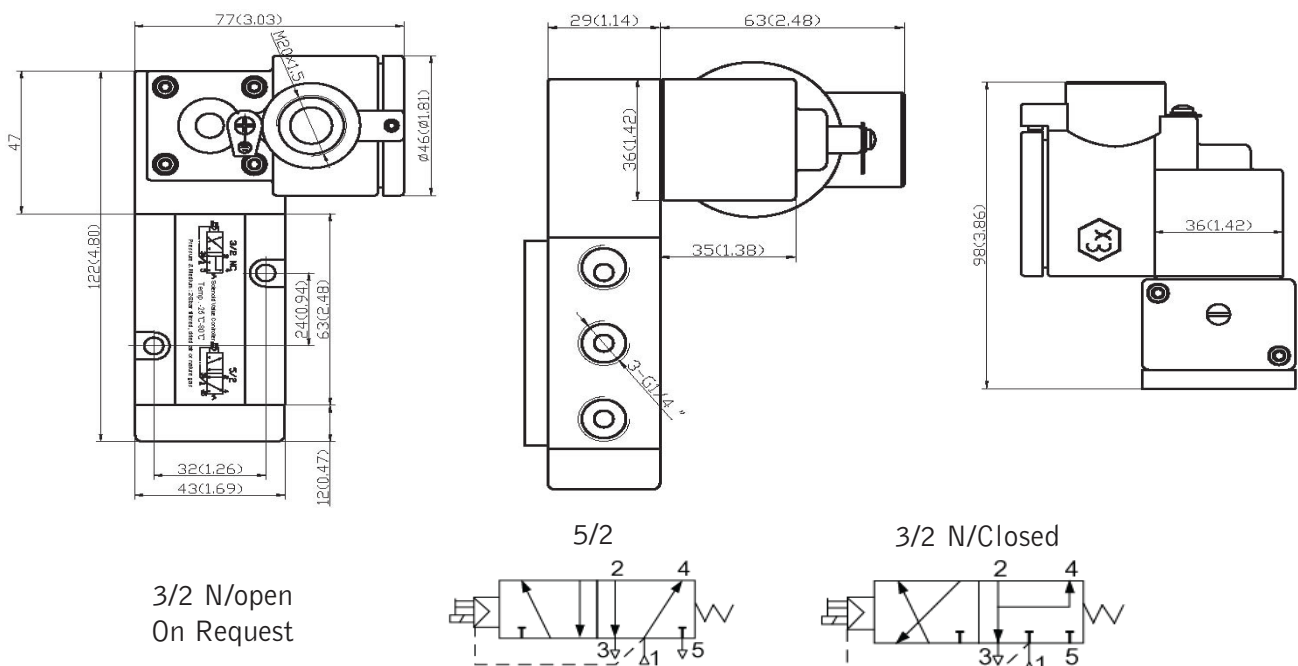
### ADVANCED FEATURES

- 1, All the exhaust ports of this spool valve are connectable, providing better environmental protection.
- 2, The valves designed with "environmentally-protected structure" offer environmental protection against the ingress of liquids, dusts or other foreign matter.

### WIRING DIAGRAM



### DRAWING & DIMENSION



\*\*\*For continuous improvement of the product, we reserve the right to alter the dimensions, technical data and information included in this data sheet.

**HIGH QUALITY | EXCELLENT PRICE | WHERE QUALITY COUNTS**

Alpha Controls Ltd Alpha House, 1 Ormside Close, Hindley Industrial Estate, Hindley Green, Wigan. WN2 4HR. | Tel: +44 (0)1942 525833 | E-mail: [technicalsales@alphacontrols.co.uk](mailto:technicalsales@alphacontrols.co.uk)  
[www.alphacontrols.co.uk](http://www.alphacontrols.co.uk) | [www.alphacontrolssystems.com](http://www.alphacontrolssystems.com)